

CLASSIC
FAVOURITES

THEME
STEAM

FAMILY
EVENTS

COMPUTER
CLUB

DINING CARS
OF THE WORLD

THE DINING CAR

EST. 2013

What's cooking on The Dining Car

VALID MARCH - OCTOBER 2022



Isle of Man
TRANSPORT



THE TICKETHALL

THE DINING CAR

EST. 2013

It's full steam ahead for great gastronomic experiences with Isle of Man Railways during 2022.

Built in 1905 and restored to service in 2013, the plush Dining Car is one of only a handful of fine dining narrow gauge dining cars in the world. The sumptuous surroundings of its saloon carriages hark back to the Pullman-style fine dining of yesteryear although there is nothing old fashioned about the fabulous food served on board.

Mouth-watering menus offer the best of seasonal home grown produce teamed with carefully chosen wines, beers or soft drinks from the bar car. Choose from Classic Favourites, Theme Steam and Dining Cars of the World series or try one of the family events and lunches.

You can also book the Dining Car for wedding parties, corporate and other private hire events, which can be tailored to individual requirements.

Please advise of any dietary requirements at time of booking. We cater for all.

Memories you will treasure...

CLASSIC FAVOURITES Page 3-5

Pie and Mash | Indo-China Express | Curry Club | Tapas Train | Go Greek!
Biker's Pie and Mash TT Special & Biker's Pie and Mash MGP Special

THEME STEAM Page 6-9

Murder Mystery | The Italian Job | Pirates of the Caribbean | Le Bistro Nuit
Bikers Burger & Beer TT Special | Viva La Mexico | Marrakesh Express
Hop-tu-Naa Murder Mystery

THEME STEAM - STATION LEGENDS Page 10-11

Carnaby Street 'Swinging 60s' | Elvis Presley 'Jailhouse Rock'
ABBA 'Super Trouper' | Queen 'Radio Ga Ga' | Elton John 'Rocket Man'

DOWN THE LINE Page 12-13

FAMILY EVENTS Page 14-17

Mother's Day | Easter Sunday Lunch & Afternoon Tea | Manxman Sunday
Lunch | Silver Dream Lunch | Fireman's Brunch | Father's Day | Wizard Express

COMMUTER CLUB Page 18

Commuter Club

DINING CARS OF THE WORLD Page 19-21

Santa Fe | Platinum Jubilee Express | Shinkansen Bullet | Flying Scotsman

How to book - Contact

01624 697457

steamdining@gov.im

- Advance booking essential.
- Your ticket includes return train travel and meal.
- You must board the Dining Car 20 minutes prior to departure.
- Drinks can be pre-ordered for your convenience.

www.rail.im

PIE AND MASH

Enjoy a hearty home produced pie with delicious fillings on the steam railway. A selection of classic desserts will be offered on your return journey. Fully stocked bar on board.

£32^{PP}

Price includes
two courses and
return travel
to Port Erin



The Pie and Mash train is available on the following Thursdays throughout the season
Departs Douglas 19:00 | Returns by 22:30
Additional bikers Pie and Mash trains on
Saturday 11 June and Saturday 27 August.

MAR	APR	MAY	JUN
24	7, 14, 21	5, 12, 19, 26	2, 16, 23, 30
JUL	AUG	SEP	OCT
7, 14, 21, 28	4, 11, 18, 25	1, 8, 15, 22, 29	6, 13, 27

INDO-CHINA EXPRESS

Exotic mix of spices combined with sweet and sour complements the rice dishes. A choice of fine Southeast Asian desserts round off your dining experience.

£32^{PP}

Price includes
two courses and
return travel
to Castletown



All Friday evening trains
Departs Douglas 19:00 | Returns by 22:30

MAR	APR	MAY	JUL
25	22	27	22
AUG	SEP	OCT	
26	23	28	

CURRY CLUB

A taste of spicy rich authentic flavours on the Curry Club train with accompanying sides and a delicious dessert selection to enjoy on your return journey.

£32^{PP}

Price includes
two courses and
return travel
to Castletown

All Friday evening trains			
Departs Douglas 19:00 Returns by 22:30			
APR	MAY	JUN	JUL
8	13	24	8

AUG	SEP	OCT
12	9	14

TAPAS TRAIN

A vibrant fiesta evening with mouth-watering Spanish and Portuguese tapas sharing platters. Bring a friend, the whole family or just treat yourself and your partner to a romantic evening of tapas delights!

£32^{PP}

Price includes
two courses and
return travel
to Castletown

All Friday evening trains		
Departs Douglas 19:00 Returns by 22:30		
APR	MAY	JUL
15	20	15

AUG	SEP	OCT
19	16	21

GO GREEK!

Enjoy a tasty traditional Greek sharing platter with a delicious range of desserts to finish your dining experience adventure on the heritage railways.

£32^{PP}

Price includes
two courses and
return travel
to Castletown



Departs Douglas 19:00 | Returns by 22:30

APR

29

SEP

30

BIKER'S PIE AND MASH TT SPECIAL

SATURDAY 11 JUN

BIKER'S PIE AND MASH MGP SPECIAL

SATURDAY 27 AUG

Enjoy a hearty pit stop from the roar of the bikes. Sit down to a home produced pie made with delicious fillings on the steam railway. A selection of TT classic desserts will be offered on your return journey. Fully stocked bar on board.

£32^{PP}

Price includes
two courses and
return travel
to Port Erin

Departs Douglas 19:00
Returns by 22:30



MURDER MYSTERY

SATURDAY 9 APR

Drama and suspicion all the way down the line on our murder mystery adventure dining experience. Between three courses can you work out who's innocent and who's the murderer as clue by clue the mystery unfolds?

£49^{PP}

Departs Douglas 19:00
Returns by 22:30



THE ITALIAN JOB

A taste of Italy on board the Dining Car. Indulge in three courses of traditional Italian cuisine as we steam through the glorious Isle of Man countryside to Castletown.

£39^{PP}

Price includes
food and
return travel
to Castletown



All Saturday evening trains
Departs Douglas 19:00 | Returns by 22:30

APR

AUG

30

13

PIRATES OF THE CARIBBEAN

SATURDAY 14 MAY

Shiver me timbers it's time to dress as Jack Sparrow, wear your best eye patches and enjoy a three course pirate dining adventure aboard the train. With a Caribbean mix of flavours to warm the heart it will be a night to remember M'hearties, yo-ho!

£39^{PP}

Departs Douglas 19:00
Returns by 22:30



LE BISTRO NUIT

French home-style cooking awaits you as you travel through stunning Manx countryside aboard the train. In a relaxed atmosphere our diners will enjoy three courses of traditional Parisian cuisine and tempting desserts on their return journey.

£39^{PP}

Price includes
food and
return travel
to Castletown



All Saturday evening trains
Departs Douglas 19:00 | Returns by 22:30

MAY	SEP
21	24

BIKERS BURGER & BEER TT SPECIAL

SATURDAY 28 MAY

Gear down for a delicious two course TT burger and beer on the dining car. Take a rest from the saddle and enjoy the stunning TT countryside of the Isle of Man and a winning break from the crowds. Early booking recommended.

£32^{PP}

Departs Douglas 19:00
Returns by 22:30



VIVA LA MEXICO

SATURDAY 9 JUL

Take your taste buds to Mexico for a three course sharing platter of appetising food packed with traditional spices and flavours. Choose from our dessert specials on your return journey.

£39^{PP}

Departs Douglas 19:00
Returns by 22:30



MARRAKESH EXPRESS

SATURDAY 30 JUL

Introducing North African seasonal flavours with a three course authentic dining experience. Enjoy this gastronomic blend of traditional ingredients and cultural influences on a plate.

£39^{PP}

Departs Douglas 19:00
Returns by 22:30



HOP-TU-NAA MURDER MYSTERY

SATURDAY 29 OCT

During the wizarding hour a murder has been committed aboard the spooky train. Between three Hop-tu-Naa courses can you solve the ghostly web of trick or treat clues and who is in the shadows waiting to ensnare their next victim....

£49^{PP}

Departs Douglas 19:00
Returns by 22:30



STATION LEGENDS

IN ASSOCIATION WITH MANX RADIO

£49^{PP}

Price includes three courses and return travel to Castletown

Departs Douglas 19:00
Returns by 22:30

Don't forget to dress up for the full station legend experience!

CARNABY STREET 'SWINGING 60S'

SATURDAY 16 APR

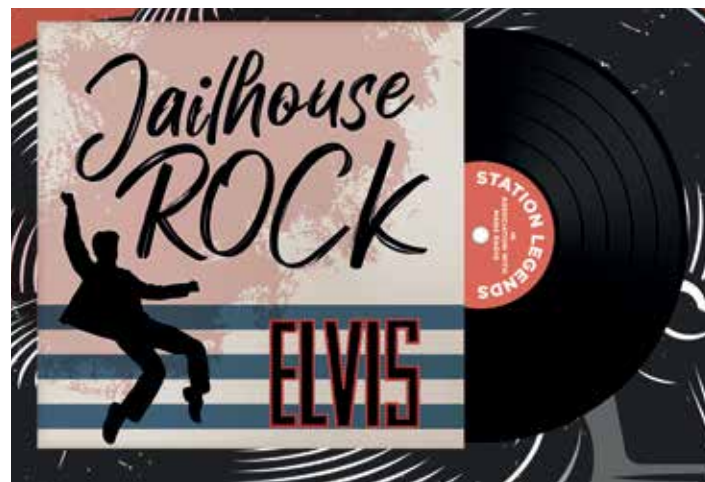
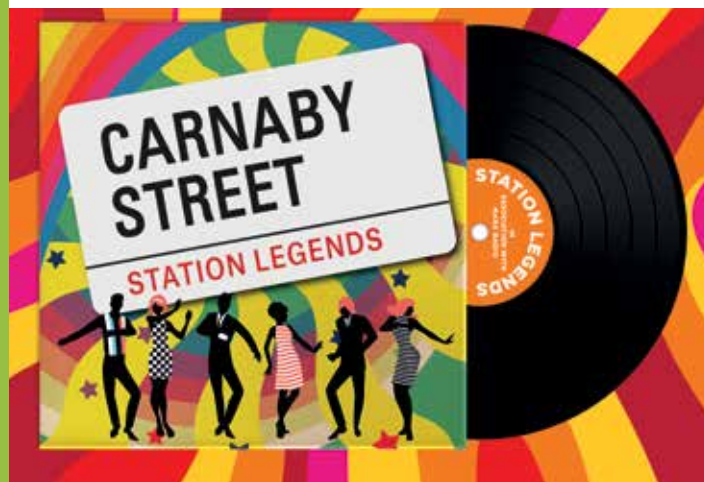


Join Manx Radio presenter Chris Williams on board the Dining Car as he takes you on a day dream believer flower power 60s inspired evening with all your favourite Carnaby Street hits and jingles.

ELVIS PRESLEY 'JAILHOUSE ROCK'

SATURDAY 16 JUL

Sharing the stage with the King of Rock and Roll, Chris Williams Manx Radio presenter will be giving us a Memphis celebration of Elvis Presley's greatest hits as we shake, rattle and roll. So put your blue suede shoes on, dress as the King and tap your feet as you enjoy a three course dining experience.



STATION LEGENDS

IN ASSOCIATION WITH MANX RADIO

£49^{PP}

Price includes three
courses and return
travel to Castletown

Departs Douglas 19:00
Returns by 22:30

Don't forget to dress up for the full station legend experience!

ABBA 'SUPER TROUPER'

SATURDAY 20 AUG

Winner takes it all on ABBA's greatest hits party train. Dancing Queen Chris Williams is our super trouper Manx Radio DJ for the night and you'll be saying thank you for the music after a fun-filled three course meal and a happy singalong.

QUEEN 'RADIO GA GA'

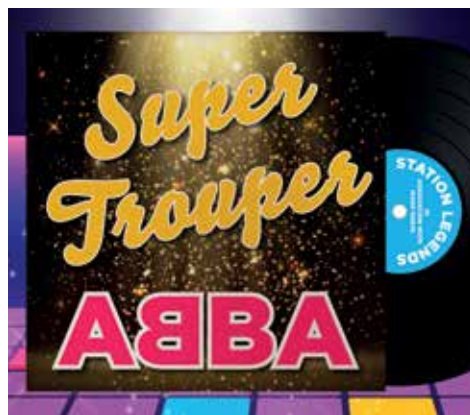
SATURDAY 17 SEP

Time to break free, bring your best friend and enjoy a three course dining car music medley with Manx Radio DJ Chris Williams who will create a kind of magic night. The show must go on so early booking recommended.

ELTON JOHN 'ROCKET MAN'

SATURDAY 15 OCT

Let the sun go down and board the unique dining car for a three course crocodile rock music festival night hosted by our Manx Radio DJ rocket man Chris Williams. Whether you want to be a tiny dancer and tap your toes while dining or sing Bennie and the Jets it will be a yellow brick road event to remember.



Down the line...

MARCH	
Pie and Mash	Thurs 24 Mar
Indo-China Express	Fri 25 Mar
Mother's Day Sunday Lunch	Sun 27 Mar
Mother's Day Afternoon Tea	Sun 27 Mar

APRIL	
Commuter Club AM/PM	Fri 1 Apr
Pie and Mash	Thurs 7 Apr
Curry Club	Fri 8 Apr
Murder Mystery	Sat 9 Apr
Manxman Sunday Lunch	Sun 10 Apr
Pie and Mash	Thurs 14 Apr
Tapas Train	Fri 15 Apr
Station Legends – Carnaby Street Swinging 60s	Sat 16 Apr
Easter Sunday Lunch	Sun 17 Apr
Easter Afternoon Tea	Sun 17 Apr
Silver Dream Lunch	Thurs 21 Apr
Pie and Mash	Thurs 21 Apr
Indo-China Express	Fri 22 Apr
Fireman's Brunch	Sat 23 Apr
Manxman Sunday Lunch	Sun 24 Apr
Go Greek!	Fri 29 Apr
The Italian Job	Sat 30 Apr

MAY	
Pie and Mash	Thurs 5 May
Commuter Club AM/PM	Fri 6 May
Dining Car of the World - Santa Fe	Sat 7 May
Manxman Sunday Lunch	Sun 8 May
Pie and Mash	Thurs 12 May
Curry Club	Fri 13 May
Pirates of the Caribbean	Sat 14 May
Silver Dream Lunch	Thurs 19 May
Pie and Mash	Thurs 19 May
Tapas Train	Fri 20 May
Le Bistro Nuit	Sat 21 May
Manxman Sunday Lunch	Sun 22 May
Pie and Mash	Thurs 26 May
Indo-China Express	Fri 27 May
Bikers Burger & Beer TT Special	Sat 28 May

JUNE	
Pie and Mash	Thurs 2 Jun
TT Commuter Club AM/PM	Mon 6 Jun
TT Commuter Club AM/PM	Tue 7 Jun
TT Commuter Club AM/PM	Wed 8 Jun
TT Commuter Club AM/PM	Thurs 9 Jun
Bikers Pie and Mash TT Special	Sat 11 Jun
Silver Dream Lunch	Thurs 16 Jun
Pie and Mash	Thurs 16 Jun
Commuter Club AM/PM	Fri 17 Jun
Father's Day Sunday Brunch	Sun 19 Jun
Father's Day Afternoon Tea	Sun 19 Jun
Pie and Mash	Thurs 23 Jun
Curry Club	Fri 24 Jun
Manxman Sunday Lunch	Sun 26 Jun
Pie and Mash	Thurs 30 Jun

JULY

Commuter Club AM/PM	Fri 1 Jul
Dining Cars of the World - Platinum Jubilee Express	Sat 2 Jul
Manxman Sunday Lunch	Sun 3 Jul
Silver Dream Lunch	Thurs 7 Jul
Pie and Mash	Thurs 7 Jul
Curry Club	Fri 8 Jul
Viva La Mexico	Sat 9 Jul
Manxman Sunday Lunch	Sun 10 Jul
Pie and Mash	Thur 14 Jul
Tapas Train	Fri 15 Jul
Station Legends – Elvis Presley 'Jailhouse Rock'	Sat 16 Jul
Silver Dream Lunch	Thurs 21 Jul
Pie and Mash	Thurs 21 Jul
Indo-China Express	Fri 22 Jul
Manxman Sunday Lunch	Sun 24 Jul
Pie and Mash	Thurs 28 Jul
Marrakesh Express	Sat 30 Jul
Manxman Sunday Lunch	Sun 31 Jul

AUGUST

Silver Dream Lunch	Thurs 4 Aug
Pie and Mash	Thurs 4 Aug
Commuter Club AM/PM	Fri 5 Aug
Dining Cars of the World - Shinkansen Bullet	Sat 6 Aug
Manxman Sunday Lunch	Sun 7 Aug
Pie and Mash	Thurs 11 Aug
Curry Club	Fri 12 Aug
The Italian Job	Sat 13 Aug
Silver Dream Lunch	Thurs 18 Aug
Pie and Mash	Thurs 18 Aug
Tapas Train	Fri 19 Aug
Station Legends – ABBA 'Super Trouper'	Sat 20 Aug
Manxman Sunday Lunch	Sun 21 Aug
Pie and Mash	Thurs 25 Aug
Indo-China Express	Fri 26 Aug
Bikers Pie and Mash MGP Special	Sat 27 Aug
Manxman Sunday Lunch	Sun 28 Aug

SEPTEMBER

Silver Dream Lunch	Thurs 1 Sep
Pie and Mash	Thurs 1 Sep
Commuter Club AM/PM	Fri 2 Sep
Pie and Mash	Thurs 8 Sep
Curry Club	Fri 9 Sep
Manxman Sunday Lunch	Sun 11 Sep
Silver Dream Lunch	Thurs 15 Sep
Pie and Mash	Thurs 15 Sep
Tapas Train	Fri 16 Sep
Fireman's Brunch	Sat 17 Sep
Station Legends – Queen 'Radio Ga Ga'	Sat 17 Sep
Pie and Mash	Thurs 22 Sep
Indo-China Express	Fri 23 Sep
Le Bistro Nuit	Sat 24 Sep
Manxman Sunday Lunch	Sun 25 Sep
Pie and Mash	Thurs 29 Sep
Go Greek!	Fri 30 Sep

OCTOBER

Dining Car of the World - Flying Scotsman	Sat 1 Oct
Silver Dream Lunch	Thurs 6 Oct
Pie and Mash	Thurs 6 Oct
Commuter Club AM/PM	Fri 7 Oct
Manxman Sunday Lunch	Sun 9 Oct
Pie and Mash	Thurs 13 Oct
Curry Club	Fri 14 Oct
Station Legends – Elton John 'Rocket Man'	Sat 15 Oct
Tapas Train	Fri 21 Oct
Fireman's Brunch	Sat 22 Oct
Manxman Sunday Lunch	Sun 23 Oct
Wizard Express	Wed 26 Oct
Wizard Express	Thurs 27 Oct
Pie and Mash	Thurs 27 Oct
Wizard Express	Fri 28 Oct
Indo-China Express	Fri 28 Oct
Hop-tu-Naa Murder Mystery	Sat 29 Oct

To book T:01624 697457 E:steamdining@gov.im

MOTHER'S DAY

SUNDAY 27 MAR

Give Mum some quality time to make her feel extra special. Sit back and enjoy a leisurely three course lunch and laughter with Mum. Early booking is recommended as tickets sell fast!

SUNDAY LUNCH

£35 | £17.50

PER ADULT | PER CHILD
(between 2-12 years)

Price includes three courses and return travel to Castletown

Departs Douglas 12:10 | Returns by 14:40

AFTERNOON TEA

£30 | £15

PER ADULT | PER CHILD
(between 2-12 years)

Price includes a selection of cakes, scones and sandwiches and return travel to Castletown

Departs Douglas 16:10 | Returns by 18:00

EASTER

SUNDAY 17 APR

Easter Sunday pamper time on the steam railways with a spring time three course Sunday lunch or take timeout for a relaxing afternoon tea of sweet and savoury treats. Early booking is recommended as tickets sell Eggstremely fast!

SUNDAY LUNCH

£35 | £17.50

PER ADULT | PER CHILD
(between 2-12 years)

Price includes three courses and return travel to Castletown

Departs Douglas 12:10 | Returns by 14:40

AFTERNOON TEA

£30 | £15

PER ADULT | PER CHILD
(between 2-12 years)

Price includes a selection of cakes, scones and sandwiches and return travel to Castletown

Departs Douglas 16:10 | Returns by 18:00



MANXMAN SUNDAY LUNCH

A luxury three-course Sunday lunch with all the trimmings for family and friends to share as you travel through beautiful Manx countryside.

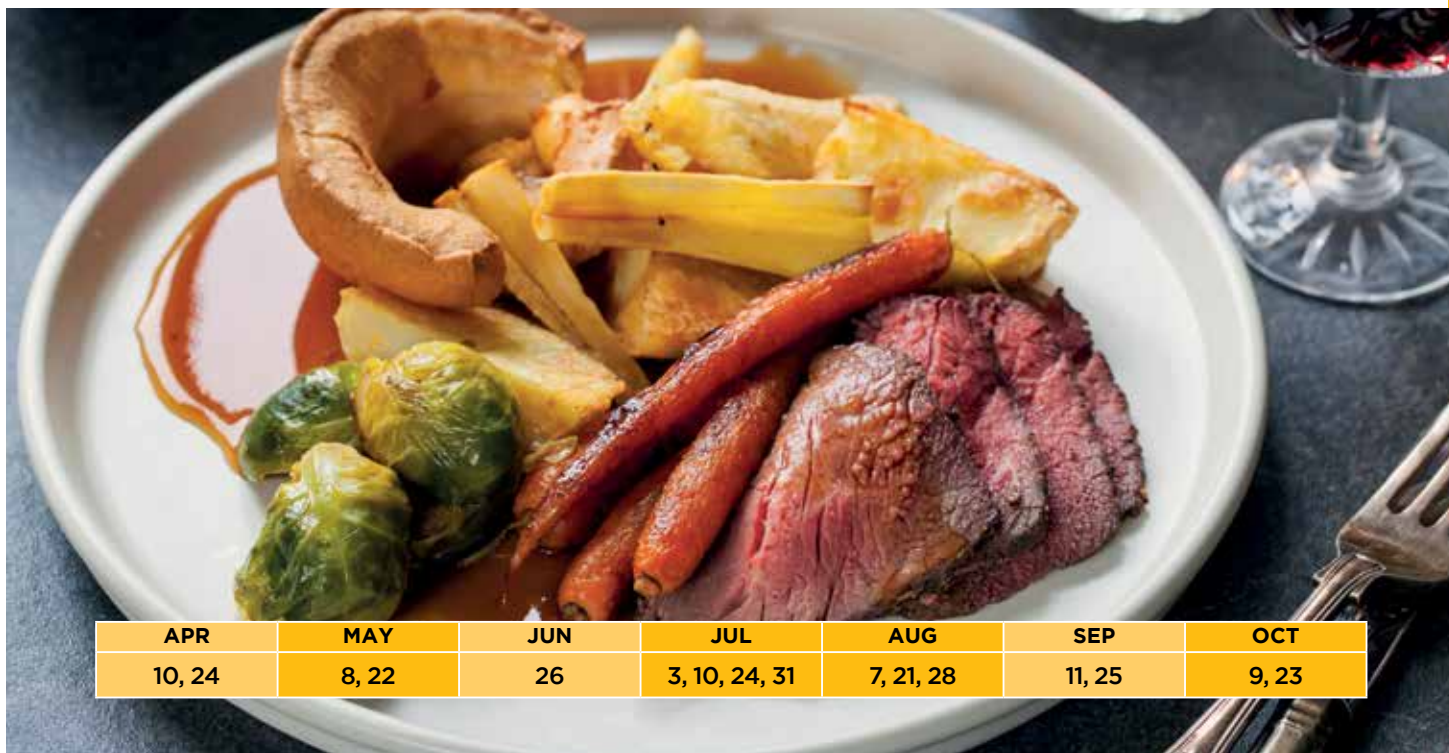
£33 | £16.50

PER ADULT

PER CHILD
(between 2-12 years)

Price includes three
courses and return
travel to Castletown

Departs Douglas 12:10 | Returns by 14:40



APR	MAY	JUN	JUL	AUG	SEP	OCT
10, 24	8, 22	26	3, 10, 24, 31	7, 21, 28	11, 25	9, 23

SILVER DREAM LUNCH

Treat yourself to a sumptuous two course lunch, including a main course and dessert. All served as you enjoy a steam adventure on the train.

£25 | **£30** Price includes food and return travel to Castletown
OVER 60s | UNDER 60s

Departs Douglas 12:10 | Returns by 14:40



APR	MAY	JUN	JUL
21	19	16	7, 21

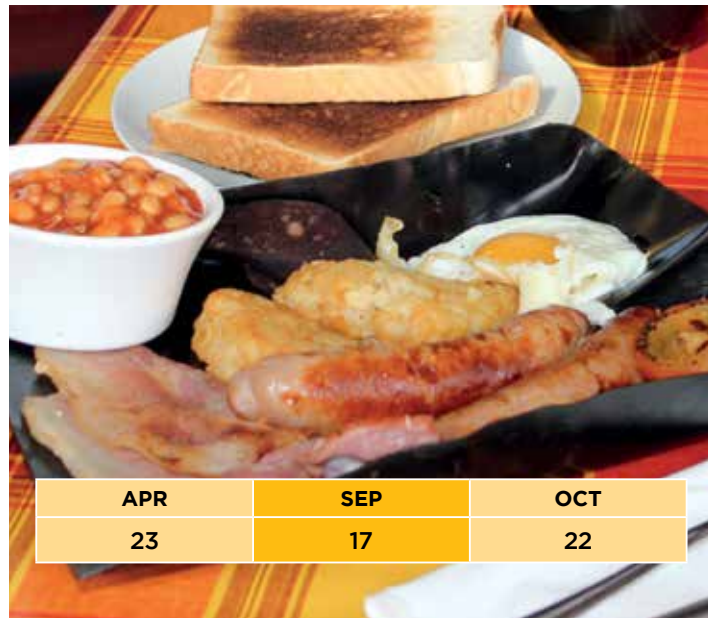
AUG	SEP	OCT
4, 18	1, 15	6

FIREMAN'S BRUNCH

The famous Fireman's Brunch is back down the line. Breakfast literally on a shovel to fill you up for the day. Early booking is recommended as tickets sell fast!

£25 | **£12.50** Price includes meal and return travel to Castletown
PER ADULT | PER CHILD (between 2-12 years)

Departs Douglas 10:30 | Returns by 12:40



APR	SEP	OCT
23	17	22

FATHER'S DAY

SUNDAY 19 JUN

Surprise Dad with our famous Fireman's Brunch served on a shovel or take the afternoon tea train. A great way to thank him for everything he does while enjoying a relaxing train ride together.

SUNDAY BRUNCH

£25 | **£12.50** Price includes meal and return travel to Castletown
PER ADULT | PER CHILD
(between 2-12 years)

Departs Douglas 10:30 | Returns by 12:40

AFTERNOON TEA

£30 | **£15** Price includes a selection of cakes, scones and sandwiches and return travel to Castletown
PER ADULT | PER CHILD
(between 2-12 years)

Departs Douglas 16:10 | Returns by 18:00



WIZARD EXPRESS

**WEDNESDAY 26, THURSDAY 27
& FRIDAY 28 OCT**

Join the Wizard Express to be part of a rather different Hop-tu-Naa train ride for 2022. Dress in your favourite Harry Potter or spooky outfit and enjoy meeting some new friends whilst testing potions, munching on a goblin eyeball lunch and a lot more gruesome treats. Owl be looking forward to seeing you but please book tickets early to avoid miserable disappointment.

£25 | **£15** Price includes two courses and return travel to Castletown
PER ADULT | PER CHILD
(between 2-12 years)

Departs Douglas 12:10 | Returns by 14:40



COMMUTER CLUB & TT COMMUTER CLUB

Take a leisurely Commuter Club train for a traditional breakfast on your way to work or unwind with a drink and snack as you travel home after work.

The Bar Car will be selling a full range of drinks and locally brewed ales.

USUAL BUS FARES APPLY.

Go Explore or Go Saver cards accepted.

* breakfast and bar snacks extra.

MORNING COMMUTE

FROM PORT ERIN TO DOUGLAS

- Full Manx breakfast,
Breakfast baps and drinks available.

EVENING COMMUTE

FROM DOUGLAS TO PORT ERIN

- Bar snacks are available on this service.

Boarding stage	Departure time	Fare to Douglas	Boarding stage	Departure time	Fare to Port Erin
Port Erin	07:45	£3.10	Douglas	17:45	£3.10
Port St Mary	07:48	£3.10	Port Soderick	17:58	£3.10
Colby	07:56	£3.10	Santon	18:06	£3.10
Castletown	08:07	£2.70	Ballasalla	18:15	£2.70
Ballasalla	08:12	£2.70	Castletown	18:22	£2.70
Santon	↓	£1.90	Colby	18:33	£1.90
Port Soderick	↓	£1.90	Port St Mary	18:41	£1.90
Douglas	08:45	-	Port Erin	18:45	-

APR	MAY	JUNE (TT Commuter Club Train)	JUN	JUL	AUG	SEP	OCT
1	6	6, 7, 8, 9	17	1	5	2	7



DINING CARS OF THE WORLD

£59^{PP}

Price includes four courses and
return travel to Castletown

Departs Douglas 19:00

Returns by 22:30

SANTA FE

SATURDAY 7 MAY

Fred Harvey revolutionised the dining car experience across New Mexico and beyond. Harvey created a franchise like no other from 1873 in partnership with Charles Morse, a railroad super-intendant of Atchison, Topeka and Santa Fe Railway line. Together with hotels, Harvey House restaurants customers enjoyed over 30 dining cars along the railroads. Our chefs have taken some of his original menus to create a very special Fred Harvey dining experience.



MENU

AMUSE-BOUCHE

Tortilla Chips

With a fiesta tomato salsa

**Fred Harvey Long
Island Roast Duck**

Served with apple sauce



APPETISERS

Santa Fe Corn Chowder

King Prawns

*In a crisp seasonal
salad, with avocado and
pineapple spiced salsa*

Fillet of Salmon

With spinach and chimichurri

*All main courses are served
with roasted sweet potatoes
and Mexican slaw*



DESSERTS

Southern Key Lime Pie

*Aunt Sally made the first pie in
Key West in 1855. A smooth,
creamy and tangy dessert.*

**Warm Chicago
Chocolate Brownie**

With creamy vanilla ice cream

Cheese Platter Selection

MAIN COURSES

**Beef Fillet and
Refried Bean Enchiladas**

*Served with guacamole
and sour cream*

DINING CARS OF THE WORLD

£70^{PP}

Price includes five courses and
return travel to Castletown.

Bar Car will be open from 19:00

Departs Douglas 19:15

Returns by 22:30

PLATINUM JUBILEE EXPRESS

SATURDAY 2 JULY



To celebrate HM Queen Elizabeth II Platinum Jubilee we will be hosting a luxurious best of British five course gourmet evening. The Tickethall will welcome guests with a glass of champagne and canapes at 18:45 before the train departs at 19:15.



MENU

Scotch Highland Broth

Originated from the crofting homes of Scotland. A distinctive and full-flavoured beef, vegetable and pearl barley dish.



Potted Shrimps

With dressed salad



Fillet of Beef Trafalgar

Finished with lobster butter and watercress accompanied with roasted potatoes and a medley of summer vegetables



Lemon Posset

With fresh strawberries



British Cheese Plate

With crackers and fruit

DINING CARS OF THE WORLD

SHINKANSEN BULLET

SATURDAY 6 AUGUST

In 1964 the world famous aerodynamic Shinkansen Bullet began a commercial service between Japan's two largest cities of Tokyo and Osaka. Following the traditional cuisine of Japan we are creating a Japanese menu of gastronomic delights with a boundless variety of regional and seasonal dishes.



£59^{PP}

Price includes four courses and return travel to Castletown

Departs Douglas 19:00

Returns by 22:30

MENU

AMUSE-BOUCHE

Japanese Rice Crackers



APPETISERS

Sushi platter

Served with wasabi and soy sauce

Yaki Gyoza –

Japanese dumplings

With oriental dipping sauces

Buckwheat Soba

Noodle Soup

*An exotic and delicious
beef consommé with nutty
and delicate flavours*



MAIN COURSES

Shinkansen Bullet

Sesame Crusted Tuna Steak

With chargrilled spring onions

Tonkatsu Chicken

*Japanese style breaded
chicken seasoned lightly
with a crispy texture glazed
in a rich tonkatsu sauce.*

Teriyaki Beef

*All main courses are served with
rice and hibachi vegetables*



DESSERTS

Green Tea Tartlet

With wasabi ice cream

Pineapple

Upside-down Cake

With vanilla sauce

Summer Cheese Board

DINING CARS OF THE WORLD

£59^{PP}

Price includes four courses and
return travel to Castletown

Departs Douglas 19:00

Returns by 22:30

FLYING SCOTSMAN

SATURDAY 1 OCTOBER

The famous Flying Scotsman was built in 1923 and was the first steam locomotive to reach 100mph in 1934. To reflect the stunning Scottish landscape it travelled through up to Edinburgh where high quality produce is reared, gathered and grown we have chosen a four course Scottish dining experience to reflect the classic menus from the Flying Scotsman. A feast of food for all passengers to enjoy.



MENU

AMUSE-BOUCHE

Scottish Smoked Salmon

On a flatbread oat cake



APPETISERS

Cullen Skink

*A rich, creamy classic
soup of Finnan Haddie
(Smoked haddock, poached
potatoes and onions from the
Northeast coast of Scotland)*

Gaelic Venison Terrine

*Accompanied with a red
beetroot and horseradish relish*

**Haggis –
National Dish of Scotland**
With bashed neeps and mashed tatties



MAIN COURSES

**Breast of Pheasant
in a Rich Claret Sauce**

*Accompanied wild mushrooms,
potatoes and button onions*

**Fillet of Scottish
Loch Salmon**

*With an infused dill butter
and cucumber ribbons*

Highland Beef Medallions

*With a rich port wine sauce
and béarnaise sauce. Served
with braised leeks, chantenay
carrots and Duchesse potatoes*



DESSERTS

**Cranachan –
'The Uncontested
King of Scottish Desserts'**

*With toasted oats, whisky,
fresh raspberries wrapped
in luxury whipped cream*

Honey Sponge Pudding
With a vanilla custard

**Scottish & English
Cheese Slate**

ISLE OF MAN TRANSPORT PRIVATE HIRE



An experience aboard Isle of Man Railways and bus vannin will ensure that your event stands out from the rest, whatever your milestone be it an anniversary, birthday, corporate event or any celebration, we can help you celebrate in style and make your day truly memorable.



Telephone: 697400 | Email: HireMe@gov.im
www.bus.im/privatehire

WEDDINGS | BIRTHDAYS | PRIVATE PARTIES | CORPORATE EVENTS | DINING





THE DINING CAR

EST. 2013

How to book - Contact

01624 697457

steamdining@gov.im

Advance booking essential.

Your ticket includes return train travel and meal.

You must board the Dining Car
20 minutes prior to departure.

Drinks can be pre-ordered for your convenience.

SEE PAGE 12 AND 13 FOR DOWN THE LINE 2022

Please advise of any dietary requirements at time of booking.
Vegetarian options are available on all events.

f/loMTransport f/The-Tickethall

www.rail.im



THE TICKETHALL

Disclaimer: Operational constraints may apply.

All information correct at time of printing. Images used for illustrative purposes only.